

# Product data sheet

## Characteristics

# XUAJ0515

Photoelectric sensors XU, XUA, diffuse, Sn 0.05 m, 12...24 VDC, cable 2 m

Product availability: Non-Stock - Not normally stocked in distribution facility

Price\*: 185.00 USD



### Main

Range of Product	Telemecanique Photoelectric sensors XU
Series name	Application assembly
Electronic sensor type	Photo-electric sensor
Sensor name	XUA
Sensor design	Cylindrical M8
Detection system	Diffuse
Material	Metal
Line of sight type	Axial
Type of output signal	Discrete
Supply circuit type	DC
Wiring Technique	3-wire
Discrete output type	NPN
Discrete output function	1 NO
Electrical connection	Cable
Cable length	6.56 Ft (2 m)
Product Specific Application	-
Emission	Infrared diffuse
[Sn] nominal sensing distance	0.16 Ft (0.05 m) diffuse

### Complementary

Enclosure Material	Nickel Plated Brass
Lens material	PMMA
Maximum sensing distance	0.20 Ft (0.06 m)
Output Type	Solid state
Add on output	Without
Cable composition	3 x 0.14 mm <sup>2</sup>
Wire insulation material	PvR
Cable outer diameter	0.14 In (3.5 mm)
Status LED	1 LED yellow)output state
[Us] rated supply voltage	12...24 V DC with reverse polarity protection
Supply voltage limits	10...30 V DC

Switching capacity in mA	<= 100 mA overload and short-circuit protection)
Switching frequency	<= 1000 Hz
Maximum voltage drop	<1 V closed state)
Current consumption	<= 25 mA no-load
Maximum delay first up	20 Ms
Maximum delay response	0.5 Ms
Maximum delay recovery	0.5 Ms
Setting-up	Without sensitivity adjustment
Diameter	0.31 In (8 mm)
Length	1.85 In (47 mm)
Net Weight	0.03 Lb(US) (0.015 kg)

## Environment

Product Certifications	CULus CE
Ambient air temperature for operation	-13...131 °F (-25...55 °C)
Ambient Air Temperature for Storage	-22...158 °F (-30...70 °C)
Vibration resistance	7 gn +/- 1 mm 10...55 Hz) IEC 60068-2-6
Shock resistance	30 gn 11 ms) IEC 60068-2-27
IP degree of protection	IP65 IEC 60529




## Ordering and shipping details

Category	22481 - SENSORS, PHOTOELECTRIC
Discount Schedule	DS2
GTIN	03389110427172
Nbr. of units in pkg.	1
Package weight(Lbs)	0.17 Lb(US) (0.08 kg)
Returnability	No
Country of origin	FR

## Packing Units

Package 1 Height	0.400 Dm
Package 1 width	1.400 Dm
Package 1 Length	1.500 Dm

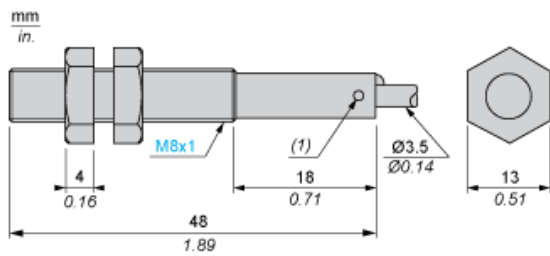
## Offer Sustainability

California proposition 65	WARNING: This product can expose you to chemicals including: Diisononyl phthalate (DINP), which is known to the State of California to cause cancer, and Diisodecyl phthalate (DIDP), which is known to the State of California to cause birth defects or other reproductive harm. For more information go to <a href="http://www.P65Warnings.ca.gov">www.P65Warnings.ca.gov</a>
REACH Regulation	 <a href="#">REACH Declaration</a>
EU RoHS Directive	Pro-active compliance (Product out of EU RoHS legal scope)  <a href="#">EU RoHS Declaration</a>
Mercury free	Yes
RoHS exemption information	 Yes

## Contractual warranty

Warranty	18 months
----------	-----------

Dimensions



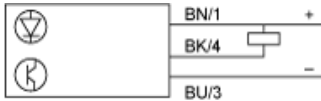
(1) LED, 4 viewing ports at 90°  
Note Fixing nut tightening torque : <2N.m

---

Wiring Schemes

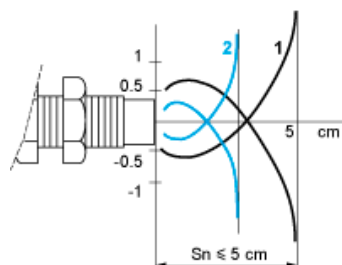
---

NPN



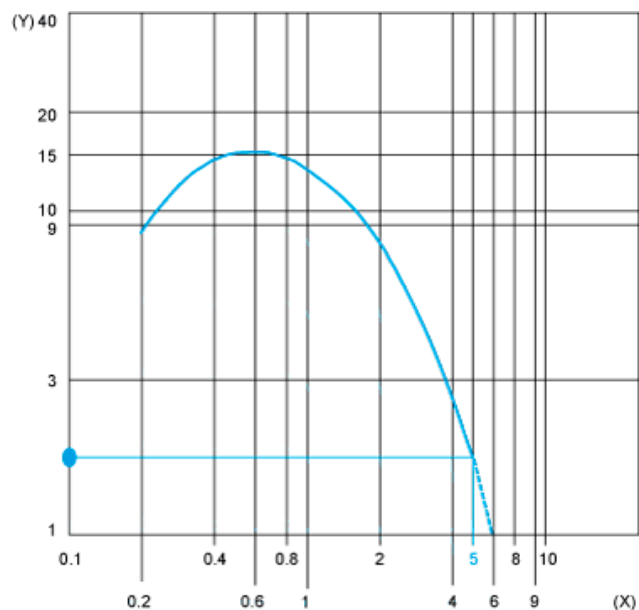
BN : Brown  
BU : Blue  
BK : Black

Detection Curves

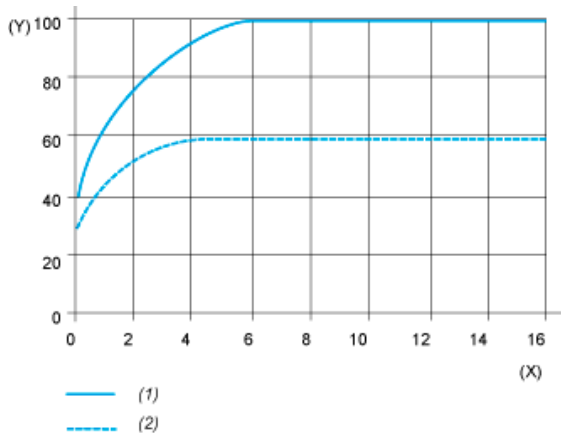


1 : White 90%  
2 : Grey 18%  
Object 5 x 5 cm

Excess Gain Curves (Ambient temperature:  $\pm 25 \text{ }^\circ\text{C}$ )



(Y) Gain  
(X) Distance (m)  
Object 5 x 5 cm, White 90%



- (1) White
- (2) Grey
- (Y) Variation of sensing distance  $S_n$
- (X) Side of square object (cm)

Detection differential (H) when object approaches from the front:  $H \leq 25\%$  of  $S_n$

Product Life Status : **Commercialised**